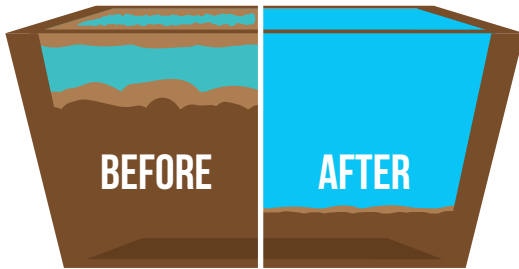




ENVIROZYME

2.0

CODE : ENV -2007



Our special blend of efficient and diverse microbial strains reduce sludge build-up, effectively lengthening the life of your lagoon.

APPLICATIONS

- Lagoons
- Grease traps
- Lift-stations
- Sewer lines
- Manholes
- Septic tanks

USAGE

Proper dosage is crucial for best results. Our team will design a schedule specifically for your system.

Lagoons: Toss pouches directly into the treatment area.

Lift Station: Mix required dosage amount into room temperature water. Let sit for 30 minutes - 1 hour for optimal bacterial activation, then add the product mix to the wastewater to be treated.

Our microbes activate within half an hour. Noticeable results may be visible after as little as 1 month.

One 1 lb pouch can treat up to 1 million gallons of wastewater!*

* May vary based on wastewater quality, flow rate and retention time. See Dosage Table for more information.

PROGRESSIVE SCIENCE



This environmentally friendly and effective biological wastewater treatment product contains 5 billion bacteria per gram; that's **11.3 trillion** bacteria in each 1 lb package!

Our formula contains 6 different strains of bacteria. This diversity allows for a wider range of application and enhanced treatment results when compared with the leading competitors.

100% BIODEGRADABLE
OECD 301D



WHAT DOES ENVIROZYME 2.0 DO?

- Extends lagoon life by reducing sludge build-up
- Eliminates waste & reduces odours
- Increases system efficiency
- Re-establishes beneficial micro-flora
- Improves effluent quality
- Enhances BOD/COD removal



NO ANIMAL TESTING
INGREDIENTS



Safe and effective cleaning products can be made completely cruelty-free. We perform no animal testing and none of our ingredients contain animal products or by-products.

GENERAL DOSAGE INSTRUCTIONS

SHOCK DOSAGE

Lagoon: 3 lb per day for the first week (M – F)¹

Lift station: (<25000 gallons per day): 1.5 lb per day for the first week (M - F)¹

Lift station: (>25000 gallons per day): 3 lb per day for the first week (M – F)¹

Shock doses establish a healthy bacterial population

¹Recommendation may vary based on water quality, retention time & flow rate

MAINTENANCE DOSAGE

Lagoon: 1 lb per day, 3 days/week (M, W, F); spring – fall¹

Lift Station (<25000 gallons per day): 0.5 lb per day, 3 days/week (M, W, F); year-round¹

Lift Station (>25000 gallons per day): 1 lb per day, 3 days/week (M, W, F); year-round¹

Maintenance doses optimize the established bacterial population in the event of increased water volume, flowrate, etc.

¹Recommendation may vary based on water quality, retention time & flow rate

STORAGE & PRECAUTION



Store in a dry, cool, well-ventilated area



Store away from direct sunlight and heat



Store away from harsh chemicals. Keep out of reach of children.

SHELF LIFE: minimum 1 year from opening

Wash hands thoroughly after handling. Gloves and eye protection not required but recommended.

For more information or Safety Data Sheets (SDS) please contact us or see our website

PACKAGING

Available in:

1 lb x 30 pouches ENV-2007A

½ lb x 60 pouches ENV-2007B

SPECIFICATIONS

DESCRIPTION	Yellow, free-flowing granular powder
WORKING pH	6.8-8.5
TEMPERATURE	Up to 45°C
MOISTURE	10%
BULK DENSITY	0.5 – 0.61 g/cm ³
BACTERIA	5 billion per gram Blend of 6 strains
NUTRIENT	Biological nutrients and enhancers

QUESTIONS?

Contact us!

Email: techteam@enviroway.net

Phone: (306) 244-7727